

MONTHLY MEMBERSHIP PROGRESS REPORT

District 13 OH2

Results as of: 6/30/2025

GMT:

LOCATION OHIO

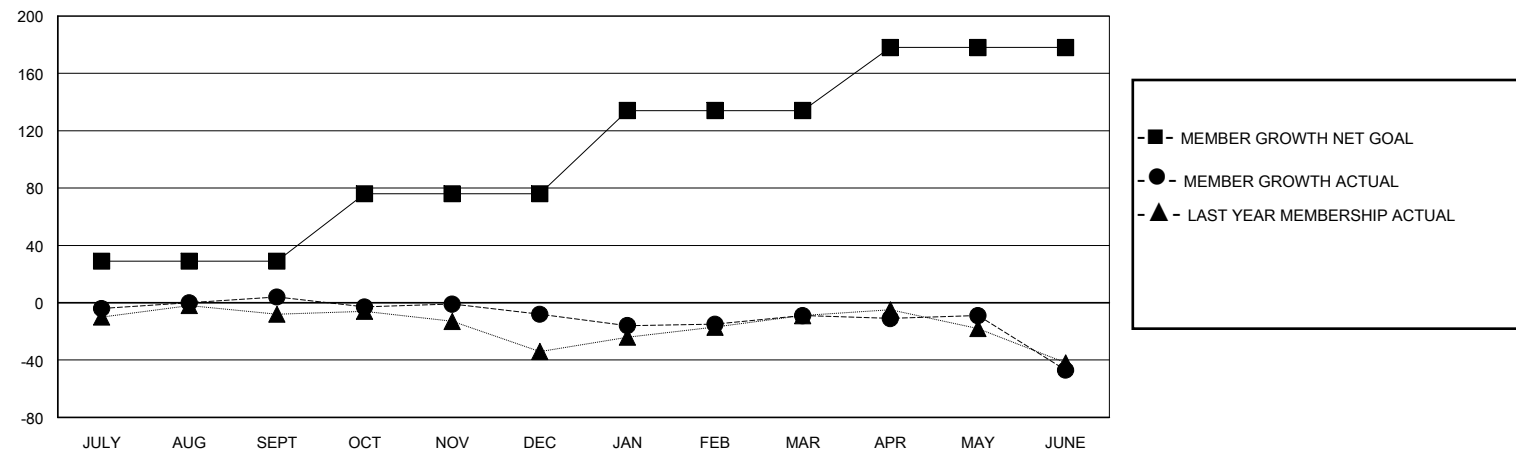
GMT CA

Clubs				Members			
RESULTS FOR 2024-2025				RESULTS FOR 2024-2025			
QUARTER	NEW CLUB GOAL	NEW CLUBS	DROPPED CLUBS	QUARTER	MEMBER GROWTH NET GOAL	MEMBER GROWTH ACTUAL	DROPPED MEMBERS ACTUAL (including transfers)
JULY/AUG/SEPT	0	0	0	JULY/AUG/SEPT	29	30	22
OCT/NOV/DEC	1	0	0	OCT/NOV/DEC	47	38	48
JAN/FEB/MAR	0	0	0	JAN/FEB/MAR	58	29	30
APR/MAY/JUNE	0	0	0	APR/MAY/JUNE	44	43	74

GOALS AND ACTUAL NEW CLUBS CUMULATIVE



GOALS AND ACTUAL MEMBERS CUMULATIVE



DROPPED CLUBS: 0	31 CLUBS OF 53 ADDED 1 OR MORE NEW MEMBERS	<u>GENDER DISTRIBUTION</u> MALE 1,097 (68.43%) FEMALE 506 (31.57%)
<u>DROPPED MEMBERS</u> DECEASED 31 CLUB CANCELLED 0 OTHER 141 TOTAL 172	<a href="#">CLICK HERE FOR CUMULATIVE MEMBERSHIP DATA</a>	TOTAL FAMILY UNIT MEMBERS 376 FAMILY MEMBERS PAYING HALF DUES 191